

VILLAGE OF LINDENHURST (LAKE COUNTY) AVAILABLE LAND FOR SALE 9.5 ACRES // \$1,025,000



50 N U.S. Highway 45 // Lindenhurst, Illinois (854' of Frontage)
NWC of Rt 45 & Country Place
VACANT LAND PARCEL

Property Information

ZONING

CB (Community Business)

2016 TAXES

\$278

FEATURES

- Next to Pulte Residential Complex
- Zoned for Mixed-Use Development
- All Municipal Utilities and City Sewer
- North-South Hwy I-94 / 10 Minutes
- Close to Gurnee Mills Shopping Mall
- Nearby Schools / Preschool Facility
- Take Route 45 to Medical Facilities
- Medical Offices Along Route 45



Eddy A. Dingman

847-313-4633 Office 847-987-6626 Cell
edingman@cbcworldwide.com

Sheryl Fisher

847-313-4611 Office 312-988-9070 Cell
sherylfisher@cbcworldwide.com

CBCWORLDWIDE.COM

©2017 Coldwell Banker Real Estate LLC, dba Coldwell Banker Commercial Affiliates. All Rights Reserved. Coldwell Banker Real Estate LLC, dba Coldwell Banker Commercial Affiliates fully supports the principles of the Equal Opportunity Act. Each Office is Independently Owned and Operated. Coldwell Banker Commercial and the Coldwell Banker Commercial Logo are registered service marks owned by Coldwell Banker Real Estate LLC, dba Coldwell Banker Commercial Affiliates.

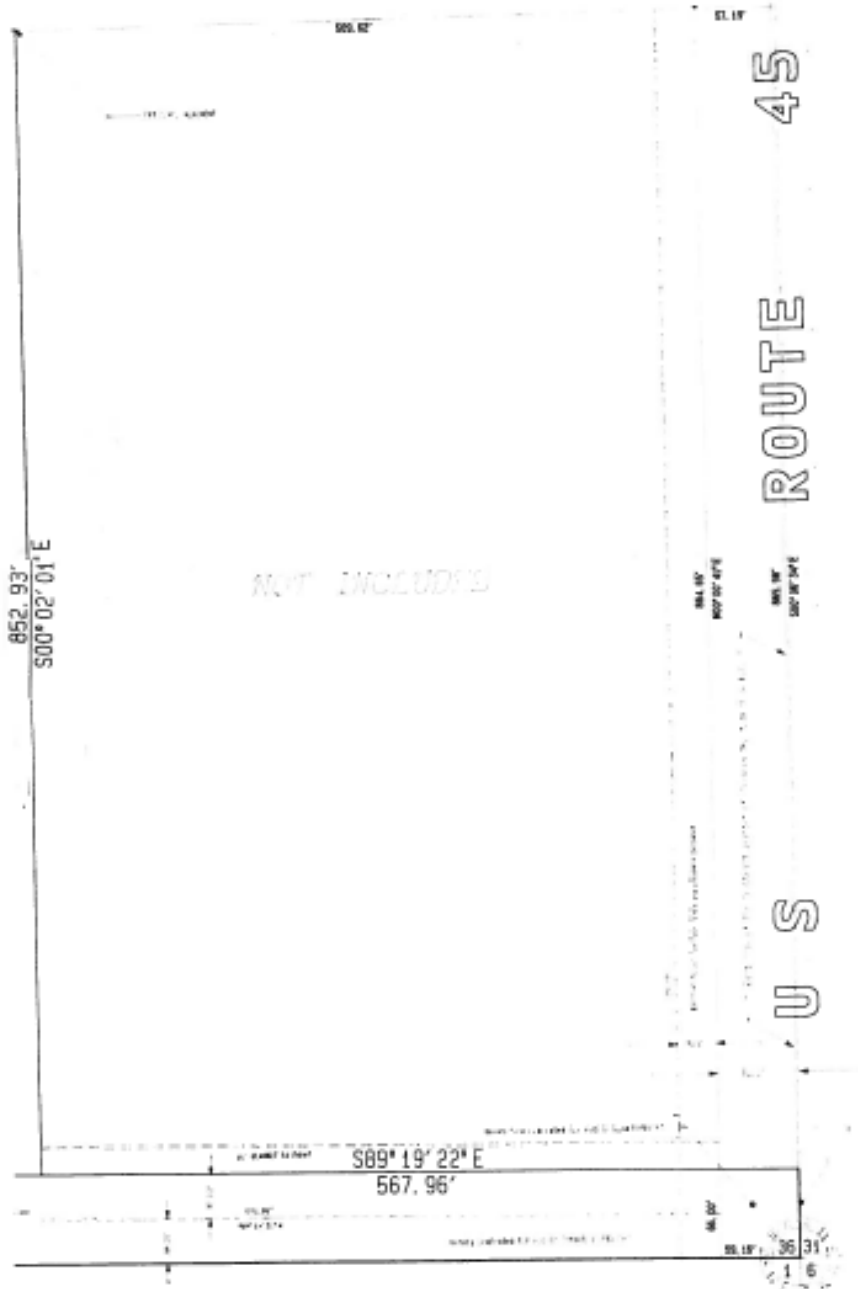
Coldwell Banker Commercial NRT
500 Skokie Boulevard, Suite 370
Northbrook, IL 60062
Main: 847-313-4600

VILLAGE OF LINDENHURST (LAKE COUNTY)
AVAILABLE LAND FOR SALE
9.5 ACRES // \$1,025,000



NRT

Property Survey



CBCWORLDWIDE.COM

©2017 Coldwell Banker Real Estate LLC, dba Coldwell Banker Commercial Affiliates. All Rights Reserved. Coldwell Banker Real Estate LLC, dba Coldwell Banker Commercial Affiliates fully supports the principles of the Equal Opportunity Act. Each Office is Independently Owned and Operated. Coldwell Banker Commercial and the Coldwell Banker Commercial Logo are registered service marks owned by Coldwell Banker Real Estate LLC, dba Coldwell Banker Commercial Affiliates.

Coldwell Banker Commercial NRT
500 Skokie Boulevard, Suite 370
Northbrook, IL 60062